

Presenting  
**NOT QUITE...**



# **BEER ON THE WYE**

## **Hereford City Ale & Cider Trail**

**Fri 23rd to Sun 25th July 2021**

**Enjoy real beers, ciders and  
perries across twelve city pubs**

**[www.beeronthewye.org.uk](http://www.beeronthewye.org.uk)**

 @beeronthewye  BeerOnTheWye  @beeronthewye

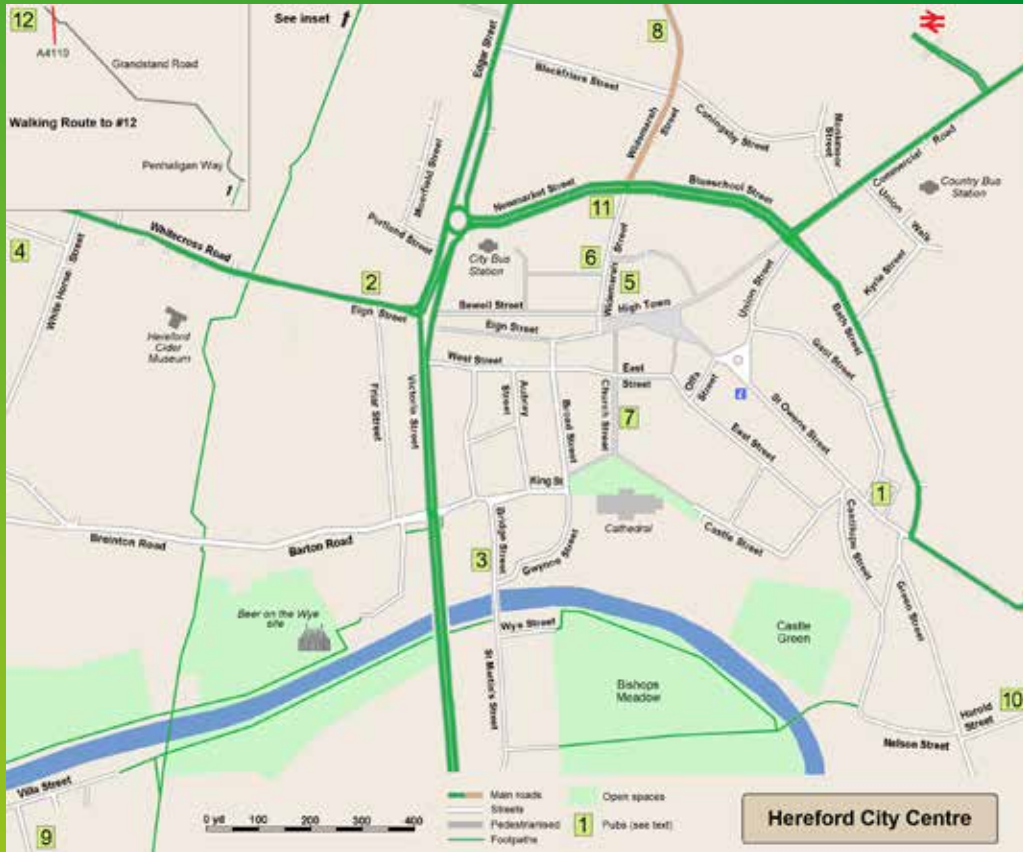
This event is organised by the Herefordshire Branch of the Campaign for Real Ale (CAMRA), with the kind support of Hereford City Council.



Campaign  
for  
Real Ale

# Not Quite Beer on the Wye

## Fri 23rd to Sun 25th July 2021



Find out what delicious and interesting real beers, ciders and perries the pubs will be offering by scanning the QR Code, or if you're not into all that scanning stuff, get the lowdown on-line at:

[www.beeronthewye.org.uk](http://www.beeronthewye.org.uk)

Information will be posted shortly before festivities begin.



SCAN ME

### 1. Barrels

69 St Owen Street, HR1 2JQ  
(01432) 274968. Open: noon-10pm daily.  
No hot meals.  
Wye Valley Brewery's flagship outlet that was home to the brewery until 2002.

### 2. Beer in Hand

136 Eign Street, HR4 0AP  
07543 327548. Open: 1-11pm  
Fri/Sat; 1-9pm Sun. No hot meals.  
Herefordshire's first micro-pub was converted from a launderette.

### 3. Black Lion

31 Bridge Street, HR4 9DG  
(01432) 266000. Open: noon-10pm daily.  
Meals: noon-8.30pm Fri/Sat; noon-5pm Sun.  
Although modified over the years, this historic, early-seventeenth century inn still justifies its grade II\* listing.

### 4. Britannia

7 Cotterell Street, HR4 0HH  
(01432) 341780. Open: 3-9pm Fri/Sat;  
noon-7.30pm Sun. No hot meals.  
Acquired by Wye Valley and re-opened in 2010, this shows what can be achieved with a failed Pubco pub.

### 5. House of Cider

The Buttermarket, Maylord Street, HR1 2DS  
Open: 10am-5pm daily. No hot meals,  
but other outlets nearby.  
Unusually situated within a market hall, this was established in 2019 by Gwatkins, the long-established cider-makers based in the Golden Valley.

### 6. Imperial

31 Widemarsh Street, HR4 9EA  
(01432) 360931. Open: 10am-midnight  
Fri/Sat; noon-11pm Sun. Meals: 10am-10pm  
Fri/Sat; noon-9pm Sun.  
Built at the beginning of the twentieth century but looking much older on the outside.

### 7. Lichfield Vaults

11 Church Street, HR1 2LR  
(01432) 266821. Open: 10am-11pm Fri/Sat;  
11am-10pm Sun. Meals: noon-4pm daily.  
Eighteenth century pub tucked away in a charming cobbled alley. Speciality Greek Cypriot dishes feature on the menu.

### 8. Oxford Arms

111 Widemarsh Street, HR4 9EZ  
07736 714823. Open: noon-11pm daily.  
Meals: no service Fri/Sat; noon-4pm Sun.  
A seventeenth century timber-framed building which, although much altered over the years, still looks and feels genuine.

### 9. Vaga Tavern

Vaga Street, HR2 7AT  
(01432) 509927 Open: 2-11pm  
Fri; noon-11pm Sat/Sun. No hot meals.  
Another community pub in the Wye Valley estate. Best accessed by the riverside footpaths. The route via the north bank passes the site of Beer on the Wye, but involves steps to cross the river on an old railway bridge.

### 10. Volunteer Inn

21 Harold Street, HR1 2QU  
(01432) 276189. Open: noon-11pm. Meals:  
noon-8pm Fri; noon-5pm Sat; noon-4pm Sun.  
A contemporary community pub. It can be accessed via a scenic route through Bishops Meadow and across the Wye.

### 11. Wellington

57 Widemarsh Street, HR4 9EA  
(01432) 272886. Open: 11am-midnight  
Fri/Sat; noon-11pm Sun. Meals: noon-3pm  
Fri/Sat; noon-4pm Sun.  
This pub survived the 1967 ring road, which caused the demise of so many pubs in this area.

### 12. Three Elms

1 Canon Pyon Road, HR4 9QQ  
(01432) 273338 Open: 11am- midnight  
Fri/Sat; 11am-11pm Sun.  
Meals: 11am-10pm daily.  
Although stretching the definition of reasonable walking distance, the Elms was keen to join this event.

*The shortest route for pedestrians to the Elms is via the footpath shown on the map, which can also be accessed from Edgar Street via Penhaligon Way or Prior Street which are just off the top of the map. City buses B, 72, 77A provide a frequent service to the Co-op store near the pub, while less frequent country services 437, 501 and 504 stop right outside.*

# Welcome aboard Hereford's first ever City Ale & Cider Trail

Twelve of the city's pubs have lined up a range of different and interesting real ales, ciders and perries for you to try. We hope you enjoy visiting the pubs (and, if you're not local, Hereford too), but please do drink responsibly as you carefully weave your way between the pubs.

The genesis of this event came about after having to cancel our Beer on the Wye festival for a second consecutive year in 2021 - owing to the restrictions that accompanied the Covid pandemic. We know many of you were bitterly disappointed, as were we - the organisers, Herefordshire CAMRA. But, despite losing our wonderful riverside celebration of beer, cider and perry, we were absolutely determined to find a way to give the city its annual beer and cider fix. Thus it was, Not Quite Beer on the Wye was born. It also means we can give something back to the city's pubs, after the torrid past 18 months they have endured. If this event is successful, then - who knows - it might just become an annual fixture for the city. We'll leave you to decide if that happens!

On your travels around the pubs, you may encounter some of the team from HOPE - who are our festival charity. All the pubs that are participating have very kindly agreed to allow their volunteers to visit to collect donations. If you get the opportunity, please consider giving something to a very good cause.

Finally, Herefordshire CAMRA wishes to acknowledge the generous support of Hereford City Council and the Mayor of Hereford in helping to make this event possible.

## SOMETHING FOR YOUR DIARY...

Returning next year will be BEER ON THE WYE XVI. July 8-10, 2022. For details go to:  
**[www.beeronthewye.com](http://www.beeronthewye.com)** or the Beer on the Wye Facebook page.

LEARN MORE ABOUT HEREFORDSHIRE CAMRA at [www.herefordcamra.org.uk](http://www.herefordcamra.org.uk)

### PLEASE HELP OUR FESTIVAL CHARITY

HOPE is a Herefordshire based charity which supports young people when a loved one is seriously ill. They support those aged 5-25 in the county through one-to-ones, activity sessions, trips and projects, whilst young people aged 11-25 elsewhere in the UK can also access one-to-one and peer support through the charity's digital service.

Visit [www.hopesupport.org.uk](http://www.hopesupport.org.uk) or call 01989 566317 for more information.

HOPE collectors will be out and about over the weekend, so please give generously if you can.



## [www.beeronthewye.org.uk](http://www.beeronthewye.org.uk)



@beeronthewye



BeerOnTheWye



@beeronthewye